

Little Deer Creek Landscape Resilience Project: Ensuring a Safer, Healthier Forest

About the Project

Located just half a mile southeast of Nevada City, the Little Deer Creek Landscape Resilience Project aims to revitalize the forest conditions within the Little Deer Creek watershed. Spearheaded by the Yuba Watershed Institute (YWI), the project collaborates with the U.S. Bureau of Land Management (BLM), Bear Yuba Land Trust (BYLT), and Sierra Streams Institute (SSI). Our mission is to bolster the forest's resilience against wildfires, droughts, and bark beetles, thereby safeguarding nearby communities and firefighters.

Why It Matters

The current forest conditions in the project area have exceeded historical norms in metrics like fuel load, tree density, and canopy closure. This raises the likelihood of devastating, high-severity wildfires that could result in significant loss of mature tree cover, soil erosion, and water quality degradation. Additionally, trees are increasingly susceptible to drought and bark beetle infestations.

The heightened wildfire risk, coupled with the close proximity of populated centers like Nevada City and Grass Valley, amplifies the potential for property damage and poses a serious threat to public safety.

Who Benefits

Recognized as a priority initiative by BLM, BYLT, the City of Nevada City, and the Nevada Irrigation District (NID), this project aims to protect valuable community resources. Among these are the popular Cascade Canal Trail, BYLT's Woodpecker Preserve, and NID's D.S. Canal, which serves over 900 customers. The project zone also includes a water treatment facility for Nevada City and a year-round archery range operated by the Nevada County Sportsmen Club.

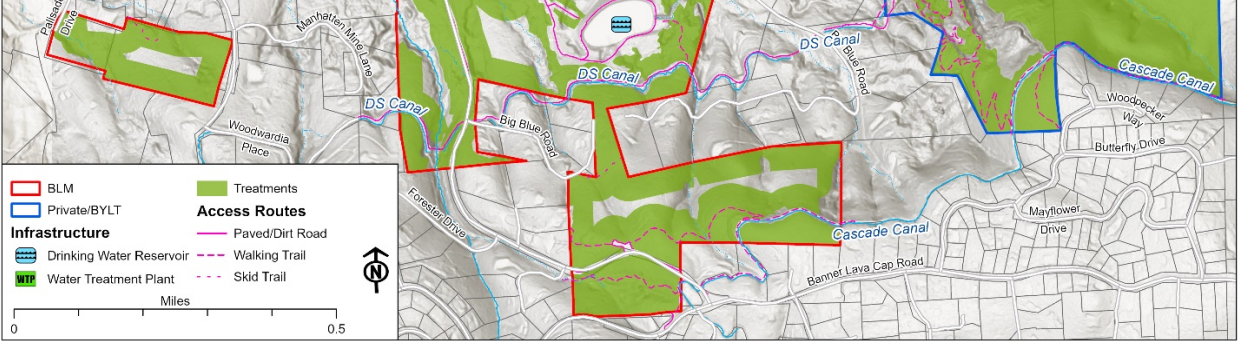
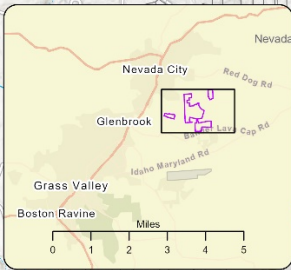
Project Approach

The project will employ a multifaceted treatment approach, including mechanical mastication, hand cutting, chipping, pile burning, and lop-and-scatter methods. The focus will be on removing smaller trees and shrubs (diameter 10 inches or less), along with larger hazard trees that are dead or dying. Primary target species for removal are incense cedar, Douglas-fir, and white fir.

Join Us

Project proponents are in the final stages of planning and actively seeking project funding. Join us at the public meeting on September 6, from 7 to 9 pm at the Seaman's Lodge in Pioneer Park (427 Nimrod St, Nevada City, CA 95959). Learn about draft plans and get your questions answered.

MAP:



PHOTOS:



The D.S. Canal, which bisects the project area running through the BLM property, supplies irrigation water to over 900 Nevada Irrigation District customers.



Nevada City operates a 55-acre-foot drinking water reservoir located in the middle of the BLM portion of the project area. Nevada City also operates a water treatment facility within the project area.



The Nevada County Sportsmen Club operates a 50-acre archery range on BLM land in the project area. The archery range is used daily by members of the public, but is currently loaded thick understory fuels.



Dense mixed conifer forest on BLM lands in the project area, along Gracie Road, a major access route for local residents. Dense surface and ladder fuels in this area would pose a major safety risk to residents and fire personnel during a wildfire event.



The parking lot for the Cascade Canal Trail, a popular public recreation area along the southern edge of the project area.